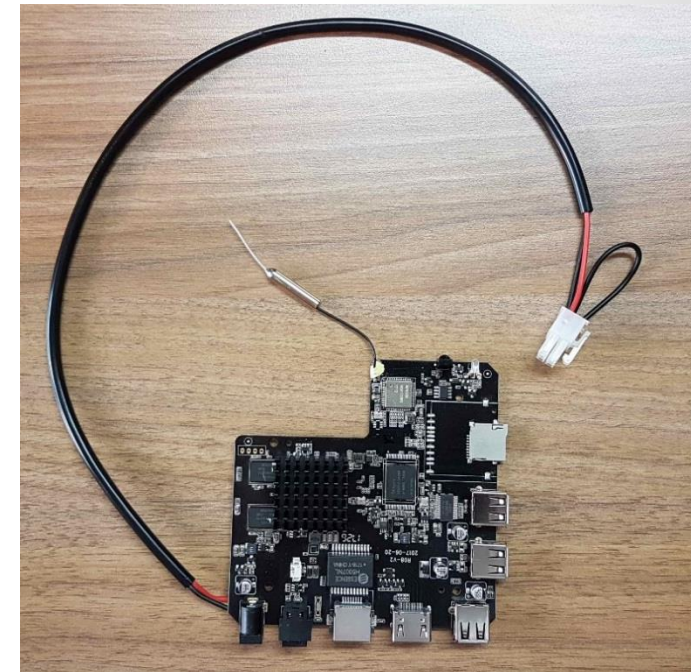
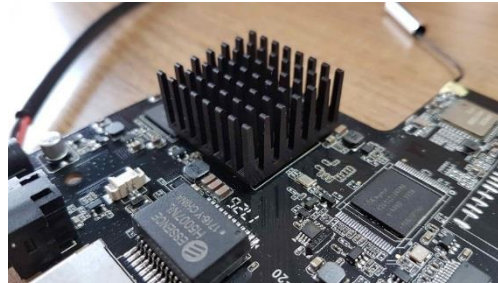


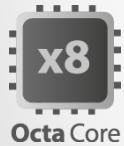
HANNSpree

Android Box 6.0

- Octa-Core CPU RK3368 Cortex A53, 64 bit
- Heat-Sink 28x28x15 mm
- 2GB RAM
- 16GB Storage
- Wi-Fi Dual Band 2.4+5GHz, BT
- Ethernet 10/100/1000M LAN Port (RJ45)
- I/O: HDMI, 3 x USB, Micro SD
- Screen rotation function
- Molex Minifit JR plug for power connection
- Auto Power-On Function
- Compatible with all HANNSpree Touch Monitors



Part. No.: 80-AK000003G000



CPU, RAM MEMORY



Octa Core CPU ARM Cortex A53, 64 bit



2GB DDR3

STORAGE, SCREEN ROTATION

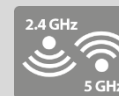


16GB Storage



Allows screen rotation 90°

Wi-Fi, AUTO POWER-ON



Dual Band 2.4 / 5 GHz WLAN IEEE 802.11 b/g/n/ac

Auto Power-On



Technical Specifications >>>

SMART WAY OF TOUCH COMPUTING

The HANNspree AIO Android Monitor combines the simplicity of Android™ with the power and productivity of a home computer. It expands your productivity by offering a perfect solution to check your e-mail quickly, edit documents and make it even more flexible by downloading many of the business applications available in the market, making it a truly viable alternative to a conventional computer, all within a very low power consumption, space saving and versatile design. You can browse the Internet, work on your documents, host web meetings and perform almost all the key tasks of a standard desk-top of All-In-One PC. Perfect thin client solution for Education, SMB, Enterprise customers and a variety of different applications such as Kiosk / Totem, Info Point, Vending...



Name / Part Nr.	Android Box 6.0 SKD Version / 80-AK000003G000
CPU	Octa Core, RK3368 ARM Cortex-A53 64 bit, up to 1.5GHz
GPU	High performance GPU with maximum 600MHz Frequency PowerVR G6110
Memory	2GB RAM DDR3
Storage Internal	16GB eMMC NAND FLASH
Storage External	Micro-SD/Micro-SDHC Card, max. 32GB
Wi-Fi	Dual Band 2.4Ghz/5Ghz WiFi, IEEE 802.11 b/g/n/ac
Bluetooth	Bluetooth 4.0
Ethernet (LAN)	10/100/1000M LAN Port (RJ45)
HDMI	HDMI 2.0 (no HDCP)
USB 2.0	2 x USB 2.0 Host, 1 x USB Host OTG
Infra Red Lens	Yes, Remote Control Optional
Power Supply	External Adapter DC 5V/2.5A, 3.5mm DC in
Power Adaptor	Molex Minifit JR plug
Weight	-
Touch Function	Compatible with all HANNspree Touch Monitors
Miracast / OTA	Yes * – N/A
Accessories	-
Operating System	Android 6.0
EAN Code	4711404022005

PART. NO.:
80-AK000003G000

